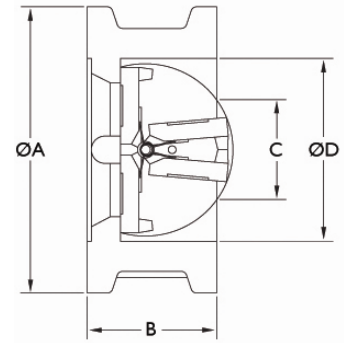
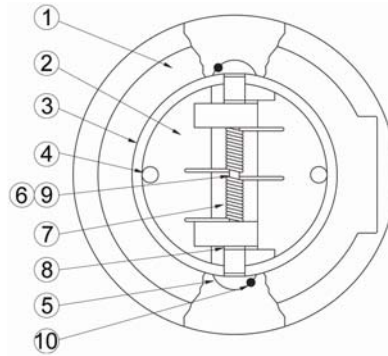


TWIN DOOR CHECK VALVES – Steel / Stn. Stl.



FEATURES

- These valves are designed to operate on vertical upward and horizontal flow applications.
- Retainerless design meets industry fugitive emissions control requirements, eliminating a potential leak path to atmosphere.
- Suitable for installation between RF flanges. (RTJ flanges optional)
- Available in sizes 2" to 36" with wafer, lug or double flanged body style.
- Resilient or metal-to-metal seats
- Body meets ASME B16.34 and API 594
- Valve cracking pressure is equal to or greater than 0.3 psid

MATERIALS

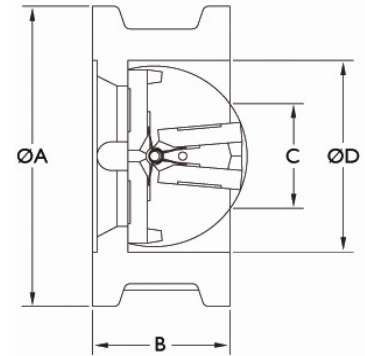
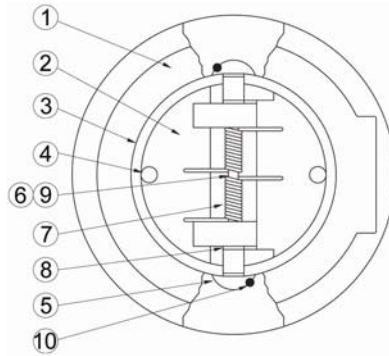
Description	Carbon Steel (S)	Carbon Steel (S1) (API Trim #1)	Carbon Steel (S5) (API Trim #5)	Carbon Steel (S8) (API Trim #8)	Carbon Steel (S10) (API Trim #10)
(1) Body	A216-WCB	A216-WCB	A216-WCB	A216-WCB	A352-LCC
(2) Plates	A351-CF8M	A217-CA15	A217-CA15	A217-CA15	A351-CF8M
(3) Body Seat	Viton *	410 SS	Stellite 6	Stellite 6	316 SS
(4) Plate Seat	A351-CF8M	A217-CA15	Stellite 6	A217-CA15	A351-CF8M
(5) Guide	316 SS	410 SS	410 SS	410 SS	316 SS
(6) Hinge Pin	316 SS	410 SS	410 SS	410 SS	316 SS
(7) Spring	316 SS	Inconel X750	Inconel X750	Inconel X750	Inconel X750
(8) Thrust Washers	316 SS	410 SS	410 SS	410 SS	316 SS
(9) Stop Pin	316 SS	410 SS	410 SS	410 SS	410 SS
(10) Set Screw	316 SS	316 SS	316 SS	316 SS	316 SS
Description	Carbon Steel (S12) (API Trim #12)	Stn. Steel (SS)	Stn. Steel (SS5) (API Trim #5)	Stn. Steel (SS10) (API Trim #10)	Stn. Steel (SS12) (API Trim #12)
(1) Body	A352-LCC	A351-CF8M	A351-CF8M	A351-CF8M	A351-CF8M
(2) Plates	A351-CF8M	A351-CF8M	A351-CF8M	A351-CF8M	A351-CF8M
(3) Body Seat *	Stellite 6	Viton *	Stellite 6	A351-CF8M	Stellite 6
(4) Plate Seat	A351-CF8M	A351-CF8M	Stellite 6	A351-CF8M	A351-CF8M
(5) Guide	316 SS	316 SS	316 SS	316 SS	316 SS
(6) Hinge Pin	316 SS	316 SS	316 SS	316 SS	316 SS
(7) Spring	Inconel X750	316 SS	Inconel X750	Inconel X750	Inconel X750
(8) Thrust Washers	316 SS	316 SS	316 SS	316 SS	316 SS
(9) Stop Pin	316 SS	316 SS	316 SS	316 SS	316 SS
(10) Set Screw	316 SS	316 SS	316 SS	316 SS	316 SS

* Optional resilient seat seals are available. Please contact factory.



Tel: 1-888-300-9155 Fax: 1-888-300-9160 www.COLTONIND.com info@coltonind.com

TWIN DOOR CHECK VALVES – Steel / Stn. Stl.



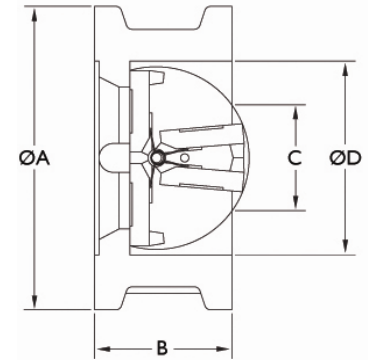
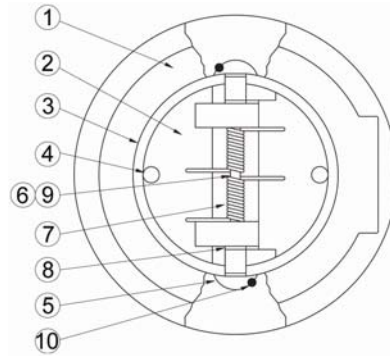
RATINGS

Colton Model	PMO (Max. Oper. Pressure)	TMO (Max. Oper. Temp.)	Colton Model	PMO (Max. Oper. Pressure)	TMO (Max. Oper. Temp.)
150(W)CTSV	285 psi @ 100°F	200 psi @ 400°F	900(W)CTSV	2220 psi @ 100°F	1900 psi @ 400°F
150(W)CTS1	285 psi @ 100°F	20 psi @ 1000°F *	900(W)CTS1	2220 psi @ 100°F	255 psi @ 1000°F *
150(W)CTS5	285 psi @ 100°F	20 psi @ 1000°F *	900(W)CTS5	2220 psi @ 100°F	255 psi @ 1000°F *
150(W)CTS8	285 psi @ 100°F	20 psi @ 1000°F *	900(W)CTS8	2220 psi @ 100°F	255 psi @ 1000°F *
150(W)CTS10	290 psi @ 100°F	125 psi @ 650°F	900(W)CTS10	2250 psi @ 100°F	1765 psi @ 650°F
150(W)CTS12	290 psi @ 100°F	125 psi @ 650°F	900(W)CTS12	2250 psi @ 100°F	1765 psi @ 650°F
150(W)CTSSV	275 psi @ 100°F	195 psi @ 400°F	900(W)CTSSV	2160 psi @ 100°F	1540 psi @ 400°F
150(W)CTSS5	275 psi @ 100°F	20 psi @ 1000°F	900(W)CTSS5	2160 psi @ 100°F	1090 psi @ 1000°F
150(W)CTSS10	275 psi @ 100°F	20 psi @ 1000°F	900(W)CTSS10	2160 psi @ 100°F	1090 psi @ 1000°F
150(W)CTSS12	275 psi @ 100°F	20 psi @ 1000°F	900(W)CTSS12	2160 psi @ 100°F	1090 psi @ 1000°F
300(W)CTSV	740 psi @ 100°F	635 psi @ 400°F	1500(W)CTSV	3705 psi @ 100°F	3170 psi @ 400°F
300(W)CTS1	740 psi @ 100°F	85 psi @ 1000°F *	1500(W)CTS1	3705 psi @ 100°F	430 psi @ 1000°F *
300(W)CTS5	740 psi @ 100°F	85 psi @ 1000°F *	1500(W)CTS5	3705 psi @ 100°F	430 psi @ 1000°F *
300(W)CTS8	740 psi @ 100°F	85 psi @ 1000°F *	1500(W)CTS8	3705 psi @ 100°F	430 psi @ 1000°F *
300(W)CTS10	750 psi @ 100°F	590 psi @ 650°F	1500(W)CTS10	3750 psi @ 100°F	2940 psi @ 650°F
300(W)CTS12	750 psi @ 100°F	590 psi @ 650°F	1500(W)CTS12	3750 psi @ 100°F	2940 psi @ 650°F
300(W)CTSSV	720 psi @ 100°F	515 psi @ 400°F	1500(W)CTSSV	3600 psi @ 100°F	2570 psi @ 400°F
300(W)CTSS5	720 psi @ 100°F	365 psi @ 1000°F	1500(W)CTSS5	3600 psi @ 100°F	1820 psi @ 1000°F
300(W)CTSS10	720 psi @ 100°F	365 psi @ 1000°F	1500(W)CTSS10	3600 psi @ 100°F	1820 psi @ 1000°F
300(W)CTSS12	720 psi @ 100°F	365 psi @ 1000°F	1500(W)CTSS12	3600 psi @ 100°F	1820 psi @ 1000°F
600(W)CTSV	1480 psi @ 100°F	1265 psi @ 400°F	2500(W)CTSV	6170 psi @ 100°F	5280 psi @ 400°F
600(W)CTS1	1480 psi @ 100°F	170 psi @ 1000°F *	2500(W)CTS1	6170 psi @ 100°F	715 psi @ 1000°F *
600(W)CTS5	1480 psi @ 100°F	170 psi @ 1000°F *	2500(W)CTS5	6170 psi @ 100°F	715 psi @ 1000°F *
600(W)CTS8	1480 psi @ 100°F	170 psi @ 1000°F *	2500(W)CTS8	6170 psi @ 100°F	715 psi @ 1000°F *
600(W)CTS10	1500 psi @ 100°F	1175 psi @ 650°F	2500(W)CTS10	6250 psi @ 100°F	4905 psi @ 650°F
600(W)CTS12	1500 psi @ 100°F	1175 psi @ 650°F	2500(W)CTS12	6250 psi @ 100°F	4905 psi @ 650°F
600(W)CTSSV	1440 psi @ 100°F	1440 psi @ 400°F	2500(W)CTSSV	6000 psi @ 100°F	4280 psi @ 400°F
600(W)CTSS5	1440 psi @ 100°F	725 psi @ 1000°F	2500(W)CTSS5	6000 psi @ 100°F	3030 psi @ 1000°F
600(W)CTSS10	1440 psi @ 100°F	725 psi @ 1000°F	2500(W)CTSS10	6000 psi @ 100°F	3030 psi @ 1000°F
600(W)CTSS12	1440 psi @ 100°F	725 psi @ 1000°F	2500(W)CTSS12	6000 psi @ 100°F	3030 psi @ 1000°F

* Upon prolonged exposure to temperatures above 800°F, the carbide phase of steel may be converted to graphite.



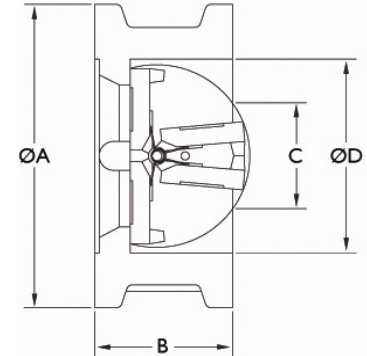
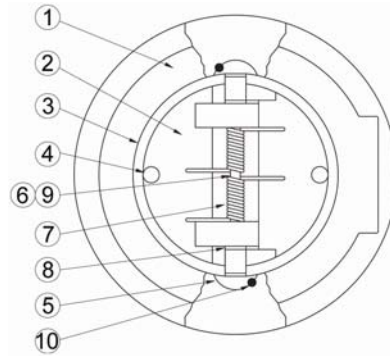
TWIN DOOR CHECK VALVES – Steel / Stn. Stl.



DIMENSIONS AND WEIGHTS

mm	Size in	ANSI Rating	End Facing	DIMENSIONS								Weight	
				A		B		C		D		kg	lbs
				mm	in	mm	in	mm	in	mm	in		
50	2	150	RF	105	4-1/8	60	2-3/8	--	--	60	2-3/8	3.2	7
50	2	300/600	RF/RJ-23	111	4-3/8	60	2-3/8	--	--	60	2-3/8	3.2	7
50	2	900/1500	RF/RJ-24	143	5-5/8	70	2-3/4	--	--	57	2-1/4	8.2	18
50	2	2500	RF/RJ-26	146	5-3/4	70	2-3/4	--	--	57	2-1/4	13.2	29
65	2-1/2	150	RF	124	4-7/8	60	2-3/8	--	--	76	3	5	11
80	3	150	RF	137	5-3/8	73	2-7/8	51	2	89	3-1/2	5.9	13
80	3	300/600	RF	149	5-7/8	73	2-7/8	51	2	89	3-1/2	5.9	13
80	3	900	RF/RJ-31	168	6-5/8	83	3-1/4	60	2-3/8	89	3-1/2	12	26
80	3	1500	RF/RJ-35	175	6-7/8	83	3-1/4	60	2-3/8	89	3-1/2	12.7	28
80	3	2500	RF/RJ-32	197	7-3/4	86	3-3/8	60	2-3/8	89	3-1/2	15.9	35
100	4	150	RF	175	6-7/8	73	2-7/8	89	3-1/2	114	4-1/2	8.2	18
100	4	300	RF	181	7-1/8	73	2-7/8	89	3-1/2	114	4-1/2	8.2	18
100	4	600	RF/RJ-37	194	7-5/8	80	3-1/8	89	3-1/2	114	4-1/2	12.8	28
100	4	900	RF/RJ-37	207	8-1/8	102	4	83	3-1/4	114	4-1/2	19.1	42
100	4	1500	RF/RJ-39	210	8-1/4	102	4	83	3-1/4	114	4-1/2	20.5	45
100	4	2500	RF-RJ-38	235	9-1/4	105	4-1/8	83	3-1/4	114	4-1/2	29.1	64
150	6	150	RF	222	8-3/4	99	3-7/8	140	5-1/2	168	6-5/8	15.9	35
150	6	300	RF	251	9-7/8	99	3/7/8	140	5-1/2	168	6-5/8	20	44
150	6	600	RF/RJ-45	267	10-1/2	137	5-3/8	89	3-1/2	168	6-5/8	36.4	80
150	6	900	RF/RJ-45	289	11-3/8	159	6-1/4	89	3-1/2	168	6-5/8	54.1	119
150	6	1500	RF/RJ-46	283	11-1/8	159	6-1/4	89	3-1/2	168	6-5/8	53	116
150	6	2500	RF/RJ-47	318	12-1/2	159	6-1/4	89	3-1/2	168	6-5/8	70	154
200	8	150	RF	279	11	127	5	171	6-3/4	219	8-5/8	28.6	63
200	8	300	RF	308	12-1/8	127	5	171	6-3/4	219	8-5/8	34.5	76
200	8	600	RF/RJ-49	321	12-5/8	165	6-1/2	168	6-5/8	207	8-1/8	72.7	160
200	8	900	RF/RJ-49	359	14-1/8	207	8-1/8	130	5-1/8	207	8-1/8	123.2	271
200	8	1500	RF/RJ-50	353	13-7/8	207	8-1/8	130	5-1/8	207	8-1/8	116.8	257
200	8	2500	RF/RJ-51	387	15-1/4	207	8-1/8	143	5-5/8	207	8-1/8	133.2	293
250	10	150	RF	340	13-3/8	146	5-3/4	235	9-1/4	273	10-3/4	48.2	106
250	10	300	RF	362	14-1/4	146	5-3/4	235	9-1/4	273	10-3/4	57.3	126
250	10	600	RF/RJ-53	400	15-3/4	213	8-3/8	200	7-7/8	260	10-1/4	118.2	260
250	10	900	RF/RJ-53	435	17-1/8	241	9-1/2	195	7-11/16	260	10-1/4	197.3	434
250	10	1500	RF/RJ-54	435	17-1/8	248	9-3/4	184	7-1/4	260	10-1/4	204.1	449
250	10	2500	RF/RJ-55	476	18-3/4	254	10	191	7-1/2	260	10-1/4	218.2	480
300	12	150	RF	410	16-1/8	181	7-1/8	260	10-1/4	324	12-3/4	81.8	180
300	12	300	RF	422	16-5/8	181	7-1/8	260	10-1/4	324	12-3/4	90.9	200
300	12	600	RF/RJ-57	457	18	229	9	232	9-1/8	300	11-13/16	163.6	360
300	12	900	RF/RJ-57	499	19-5/8	292	11-1/2	207	8-1/8	300	11-13/16	292.7	644
300	12	1500	RF/RJ-58	521	20-1/2	305	12	210	8-1/4	300	11-13/16	374.5	824
300	12	2500	RF/RJ-59	549	21-5/8	305	12	226	8-7/8	300	11-13/16	395	870

TWIN DOOR CHECK VALVES – Steel / Stn. Stl.



DIMENSIONS AND WEIGHTS

Size		ANSI Rating	End Facing	DIMENSIONS								Weight	
mm	in			mm	in	mm	in	mm	in	mm	in	kg	lbs
350	14	150	RF	451	17-3/4	184	7-1/4	286	11-1/4	340	13-3/8	122.7	270
350	14	300	RF	486	19-3/8	222	8-3/4	286	11-1/4	340	13-3/8	177.3	390
350	14	600	RF/RJ-61	486	19/3/8	273	10-3/4	232	9-1/8	340	13-3/8	186.4	410
350	14	900	RF/RJ-62	521	20-1/2	356	14	--	--	340	13-3/8	396.4	872
350	14	1500	RF/RJ-63	578	22-3/4	356	14	--	--	340	13-3/8	485.5	1068
400	16	150	RF	514	20-1/4	191	7-1/2	330	13	387	15-1/4	134.1	295
400	16	300	RF	540	21-1/4	232	9-1/8	330	13	387	15-1/4	208.2	458
400	16	600	RF/RJ-65	565	22-1/4	305	12	330	13	387	15-1/4	330.9	728
400	16	900	RF/RJ-66	575	22-5/8	384	15-1/8	162	6-3/8	387	15-1/4	533.6	1174
400	16	1500	RF/RJ-67	641	25-1/4	384	15-1/8	162	6-3/8	387	15-1/4	588.6	1295
450	18	150	RF	549.5	21-5/8	203	8	394	15-1/2	438	17-1/4	141.8	312
450	18	300	RF	597	23-1/2	264	10-3/8	391	15-3/8	438	17-1/4	295.5	650
450	18	600	RF/RJ-69	613	24-1/8	362	14-1/4	330	13	438	17-1/4	395.5	870
450	18	900	RF/RJ-70	638	25-1/8	451	17-3/4	245	9-5/8	438	17-1/4	610.9	1344
450	18	1500	RF/RJ-71	705	27-3/4	468	18-7/16	184	7-1/4	438	17-1/4	793.2	1745
500	20	150	RF	607	23-7/8	219	8-5/8	438	17-1/4	487	19-1/8	214.5	472
500	20	300	RF	654	25-3/4	292	11-1/2	438	17-1/4	487	19-1/8	364.1	801
500	20	600	RF/RJ-73	683	26-7/8	368	14-1/2	432	17	487	19-1/8	543.6	1196
500	20	900	RF/RJ-74	699	27-1/2	451	17-3/4	406	16	487	19-1/8	639.1	1406
500	20	1500	RF/RJ-75	756	29-3/4	533	21	210	8-1/4	487	19-1/8	1278.2	2812
600	24	150	RF	718	28-1/4	222	8-3/4	537	21-1/8	578	22-3/4	358.2	788
600	24	300	RF	775	30-1/2	318	12-1/2	524	20-5/8	578	22-3/4	526.4	1150
600	24	600	RF/RJ-77	791	31-1/8	438	17-1/4	524	20-5/8	578	22-3/4	819.1	1802
600	24	900	RF/RJ-78	838	33	495	19-1/2	445	17-1/2	578	22-3/4	1233.2	2713
600	24	1500	RF/RJ-79	902	35-1/2	559	22	391	15-3/8	578	22-3/4	2712.7	5968
750	30	150	RF	883	34-3/4	305	12	641	25-1/4	735	28-15/16	661.8	1456
900	36	150	RF	1048	41-1/4	368	14-1/4	648	25-1/2	864	34	684.1	1505

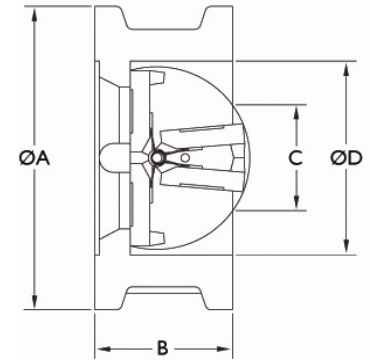
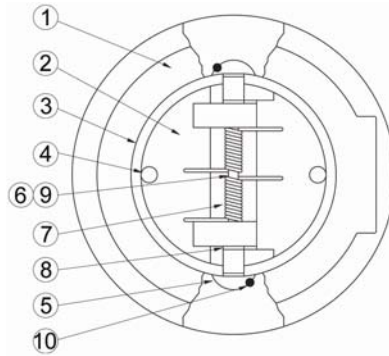
- Notes:
1. Dimensions are in accordance with API 594
 2. Valve sizes through 24" are designed for installation between flanges in dimensional accordance with ASME B16.1 and ASME B16.5
 3. Valve sizes 30" and larger are designed for installation between flanges in dimensional accordance with ASME B16.47 Series A
 4. "C" dimension is minimum required bore diameter of companion flanges

Cv VALUES (GPM @ ΔP 1 psi)

Valve Size	Cv	Valve Size	Cv	Valve Size	Cv	Valve Size	Cv	Valve Size	Cv
2" (50)	48	4" (100)	291	10" (250)	2563	16" (400)	7355	24" (600)	17804
2-1/2" (65)	90	6" (150)	705	12" (300)	4295	18" (450)	9537	30" (750)	28660
3" (80)	171	8" (200)	1795	14" (350)	5463	20" (500)	12004		



TWIN DOOR CHECK VALVES – Steel / Stn. Stl.



ORDERING CODES

	ANSI CLASS	END CONNECTIONS	VALVE TYPE	BODY MATERIAL	SEAT MATERIAL
	150	W	CT	S	V
Example:	150 – 150 ANSI 300 – 300ANSI 600 – 600 ANSI 900 – 900 ANSI 1500 – 1500 ANSI 2500 – 2500 ANSI	W – Wafer Type L – Lug Type WR – Wafer RTJ LR – Lug RTJ DF – Double Flanged	CT – Twin Door Check	S – Carbon Steel SS – Stainless Steel	V – Resilient-Viton B – Resilient-Buna-N E – Resilient-EPDM T – Resilient-Teflon 1 – API Trim #1 5 – API Trim #5 8 – API Trim #8 10 – API Trim #10 12 – API Trim #12

Colton has a policy of continuous product research and improvement and reserves the right to change design and specifications without notice