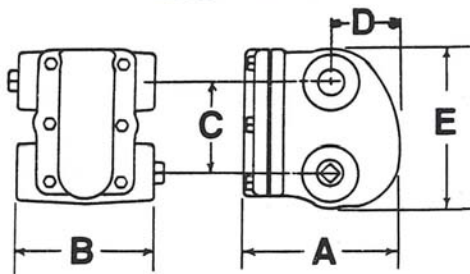
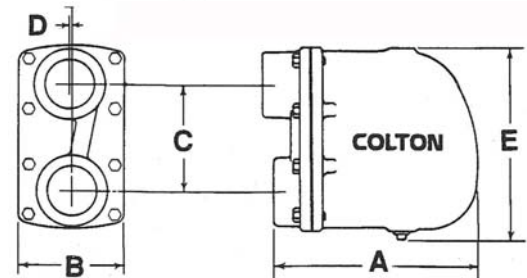


FLOAT AND THERMOSTATIC STEAM TRAPS – FTX/FTC Series



FTX SERIES
3/4" and 1" All Ranges
1-1/4" 15 psi and 30 psi only



FTC SERIES
1-1/2" and 2" All Ranges
1-1/4" 75 psi and 125 psi only

CONSTRUCTION

Colton float and thermostatic steam traps are compact, of rugged design, and with easy access to all interior parts. The body is cast with two inlet and two outlet pipe connections that permit four combinations of pipe hook-ups for all types of applications *. All working parts are stainless steel and attached to the cover casting

* Except the 1-1/4" FTC-075, FTC-125 and all 1-1/2" and 2" models which are piped through the cover

RATINGS

PMD (maximum differential pressure): See model selection
 TMO (maximum operating temperature): Saturated steam
 temperature at operating pressure
 PMA (maximum allowable pressure): 250 psi
 TMA (maximum allowable temperature): 450°F

MATERIALS

Part	Description
Cover	Cast Iron, ASTM-A278 Class 30
Body	Cast Iron, ASTM-A278 Class 30
Mechanism	Stainless Steel
Air Vent	Stainless Steel
Float	Stainless Steel
Gasket	Non-Asbestos Fiber
Cover Bolts	Steel, Grade 5
Plug	Cast Iron, ASTM-A278 Class 30

DIMENSIONS AND WEIGHTS

SIZE		MODELS	DIMENSIONS										WEIGHT	
			A		B		C		D		E			
mm	in		mm	in	mm	in	mm	in	mm	in	mm	in	kg	lbs
20	3/4	FTX-015, 030, 075, 125	152	6	146	5-3/4	86	3-3/8	76	3	152	6	6.35	14
25	1	FTX-015, 030, 075, 125	152	6	146	5-3/4	86	3-3/8	76	3	152	6	6.35	14
32	1-1/4	FTX-015, 030	152	6	146	5-3/4	86	3-3/8	76	3	152	6	6.35	14
32	1-1/4	FTC-075, 125	213	8-3/8	111	4-3/8	78	3-1/16	15	19/32	206	8-1/8	7	15.5
40	1-1/2	FTC-015, 030, 075, 125	213	8-3/8	111	4-3/8	78	3-1/16	15	19/32	206	8-1/8	7	15.5
50	2	FTC-015, 030, 075, 125	255	10-1/16	127	5	125	4-15/16	3	1/8	225	8-7/8	12	26.5



Tel: 1-888-300-9155 Fax: 1-888-300-9160 www.COLTONIND.com info@coltonind.com

FLOAT AND THERMOSTATIC STEAM TRAPS – FTX/FTC Series



CAPACITIES (SHEMA) – Lbs. condensate per hour

Pipe Size	Model No.	Pressure Differential (PSIG)						
		1/4	1/2	1	2	5	10	15
3/4	FTX-015	70	100	140	200	210	220	230
1	FTX-015	175	250	350	500	525	550	575
1-1/4	FTX-015	425	600	850	1200	1260	1320	1380
1-1/2	FTC-015	850	1200	1700	2400	2520	2640	2760
2	FTC-015	1775	2500	3550	5000	5250	5500	5750

Note On Capacity: Low pressure float & thermostatic capacities are in accordance with standards adopted by the Steam Heating Manufacturers Association (SHEMA) providing for the continuous elimination of air when the trap is operating at its maximum rating. No safety factor need be applied. *Actual capacities are significantly greater than SHEMA rating indicates*

CAPACITIES (Gross) – Lbs. condensate per hour

Pipe Size	Model No.	Pressure Differential (PSIG)														
		1/4	1/2	1	2	5	10	15	20	25	30	40	50	75	100	125
3/4	FTX-015	385	490	670	905	1075	1450	1650	—	—	—	—	—	—	—	—
1	FTX-015	385	490	670	905	1075	1450	1650	—	—	—	—	—	—	—	—
1-1/4	FTX-015	630	808	1029	1302	1880	2780	3005	—	—	—	—	—	—	—	—
1-1/2	FTC-015	1155	1785	2520	3465	5250	6930	7980	—	—	—	—	—	—	—	—
2	FTC-015	2415	2940	3780	4883	7245	9450	11445	—	—	—	—	—	—	—	—
3/4	FTX-030	293	387	513	683	900	1050	1235	1425	1540	1650	—	—	—	—	—
1	FTX-030	293	387	513	683	900	1050	1235	1425	1540	1650	—	—	—	—	—
1-1/4	FTX-030	394	525	725	956	1260	1575	1764	1890	2350	2700	—	—	—	—	—
1-1/2	FTC-030	1050	1365	1785	2415	3570	4830	5775	6300	6930	7350	—	—	—	—	—
2	FTC-030	1365	1890	2625	3570	5460	7140	8190	9030	9765	10500	—	—	—	—	—
3/4	FTX-075	240	300	420	505	630	725	820	905	980	1020	1190	1345	1645	—	—
1	FTX-075	240	300	420	505	630	725	820	905	980	1020	1190	1345	1645	—	—
1-1/4	FTC-075	535	720	970	1300	1910	2660	3050	3400	3750	4000	4390	4750	5420	—	—
1-1/2	FTC-075	535	720	970	1300	1910	2660	3050	3400	3750	4000	4390	4750	5420	—	—
2	FTC-075	893	1155	1575	2100	3225	4358	4987	5460	5775	6090	6720	7140	8085	—	—
3/4	FTX-125	225	285	350	385	455	500	535	600	650	720	850	1010	1275	1505	1640
1	FTX-125	225	285	350	385	455	500	535	600	650	720	850	1010	1275	1505	1640
1-1/4	FTC-125	380	510	675	880	1310	1700	2065	2315	2550	2710	3035	3225	3790	4200	4480
1-1/2	FTC-125	380	510	675	880	1310	1700	2065	2315	2550	2710	3035	3225	3790	4200	4480
2	FTC-125	578	709	924	1286	2048	2730	3150	3413	3675	3990	4410	4850	5775	6405	6930

Note On Capacity: Trap capacities are based on continuous discharge at steam temperature. Significantly greater capacities are realized when condensate temperature is below saturated steam temperature. Appropriate safety factors should be applied to the ratings

Note: FLOAT TRAPS are available for those applications where draining liquid is the only requirement of the trap. In those instances the thermostatic air vent is replaced by a solid plug. To order, use the previous model numbers with the prefix "FAX" or "FAC" instead of "FTX" or "FTC". All pipe sizes and pressure ratings are available.

Colton has a policy of continuous product research and improvement and reserves the right to change design and specifications without notice.

